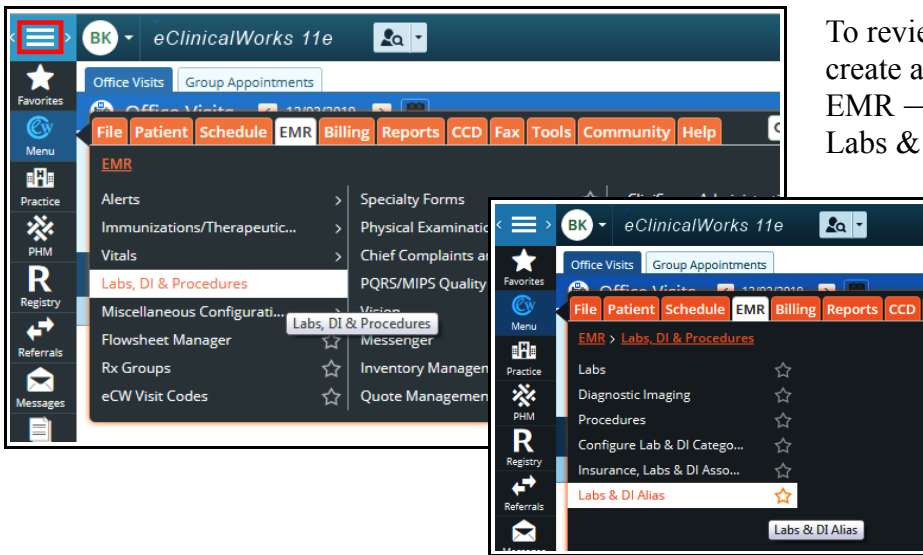
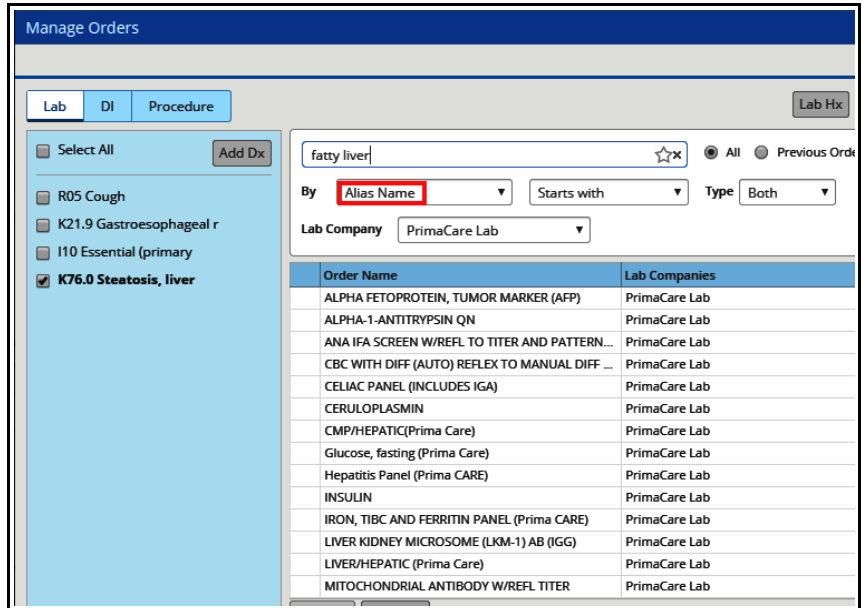


Lab Alias's in eCW 11e

A lab alias is simply a group of lab orders in a folder that can be accessed by calling on the alias name. I think of a lab alias as another way to make a list of lab favorites. In the example to the right, I have selected the alias “fatty liver”. Using this alias to order labs to work-up a patient with a new diagnosis of liver steatosis greatly improves my speed, and also reminds me of the labs I often order for this problem. This looks and functions very much like a lab favorites list.



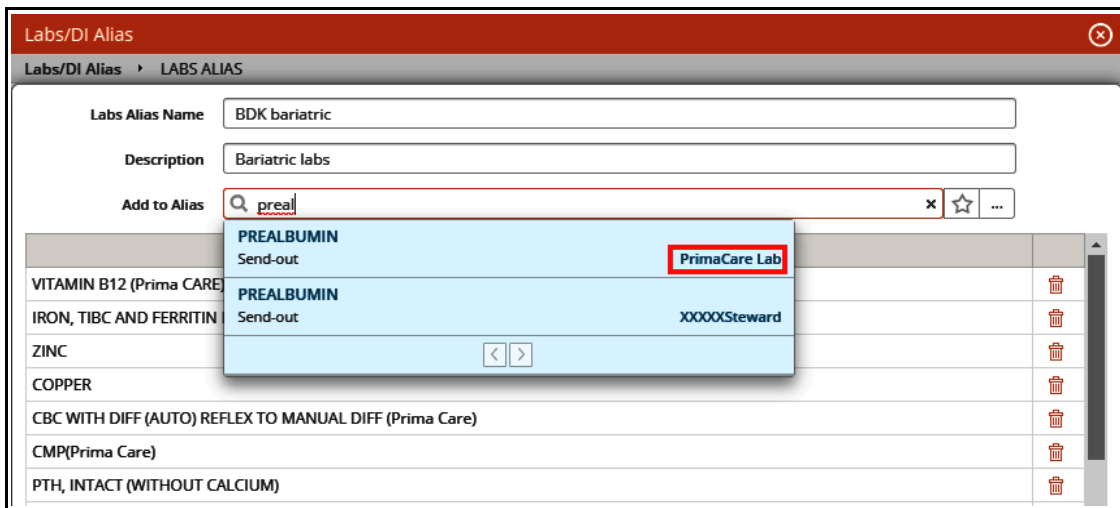
To review existing lab alias's, or to create a new lab alias, go to Menu → EMR → Labs, DI & Procedures → Labs & DI Alias.

If you don't see the side navigation bar, click on the 3 parallel lines at the top left of the screen (called the hamburger).

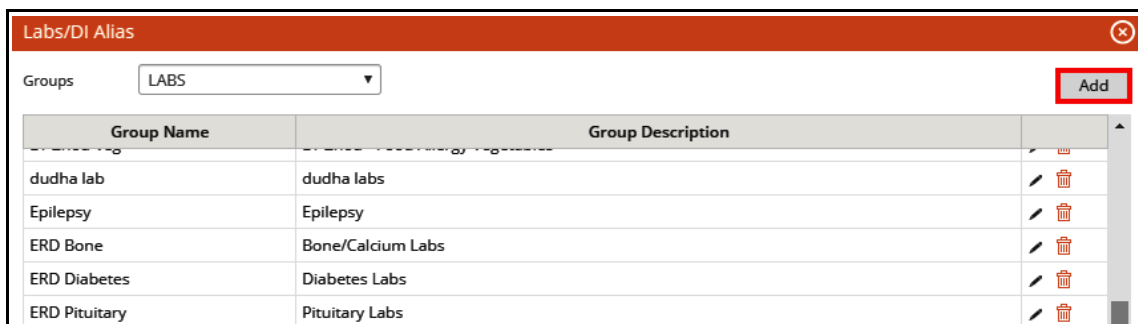
To view (or update) an existing alias, click on the pencil to the right of the alias. But please do not update an alias that you did not create.

Labs/DI Alias		
Groups: LABS		
Group Name	Group Description	
Abdominal pain	Abdominal pain	
Adrenal	Adrenal	
all perkins	perkins lab fav	
Anemia	Anemia	
AO ILD	ILD Work Up	
BDK bariatric	Bariatric labs	
BDK diarrhea	Diarrhea	

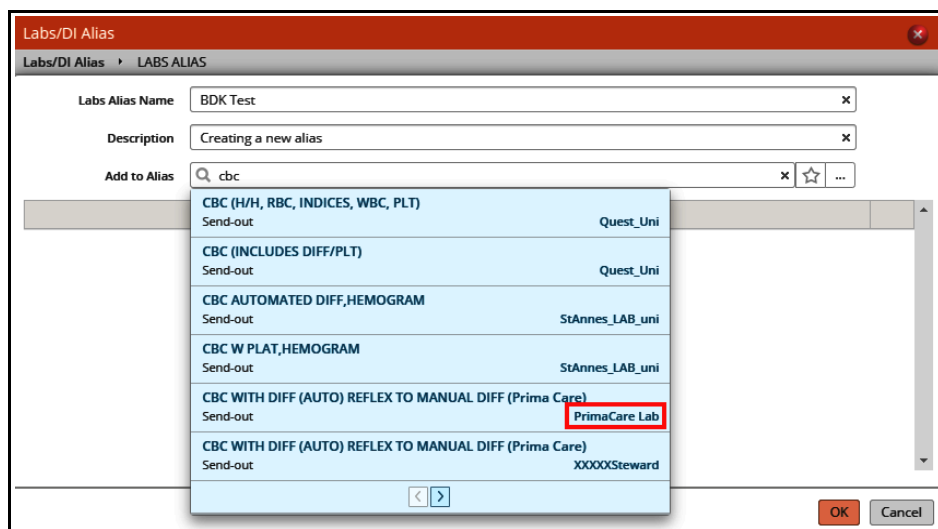
In the screenshot below, I am adding a prealbumin (associated with the Prima CARE lab) to my bariatric lab alias. Clicking on the trashcan to the right of a lab will remove it from the alias.



To create a new lab alias, click on “Add”.



Choose a name for the alias – it is wise to preface the name with your initials. This ensures that the name is unique, and allows you to quickly find your alias's in the future. When adding labs, always make sure the lab is associated with the Prima CARE lab.



I have never personally found DI alias's to be helpful, but they can be created by switching to the DI screen, and following the same workflow used in creating a lab alias.

The screenshot shows a software interface for managing 'Labs/DI Alias'. The window title is 'Labs/DI Alias'. At the top left, there is a 'Groups' dropdown menu with 'LABS' selected. Below it is a table with columns 'Group' and 'Group Description'. The table lists various medical groups and their descriptions. At the bottom right, there is a 'Close' button.

Group	Group Description	
Abdominal pain	Abdominal pain	/ 🗑️
Adrenal	Adrenal	/ 🗑️
all perkins	perkins lab fav	/ 🗑️
Anemia	Anemia	/ 🗑️
AO ILD	ILD Work Up	/ 🗑️
BDK bariatric	Bariatric labs	/ 🗑️
BDK diarrhea	Diarrhea	/ 🗑️
BDK DM	DM	/ 🗑️
Bone	Bone	/ 🗑️
Cao	Cao	/ 🗑️
chc	routine	/ 🗑️
Colon	Colon	/ 🗑️

Brad Kney, MD
December 3, 2019